

PROTECT OUR NATURAL AREAS

Every Step Counts!

more info



TrailSeedStateChangeLog-06-06-2016.pdf

These steps to prevent weed seeds and plant pathogens from spreading on hiking boots are needed to prevent the movement of invasive species into wildlands. Weed seeds and plant pathogen propagules can survive in soil and plant debris for many years and then be picked up and inadvertently moved on footwear.

An example of this are the plant pathogens in the genus *Phytophthora* (cause of Sudden Oak Death and the Irish potato famine) that have been shown to be moved on trails, by humans and also by animals.

Plant pathogens are organisms, often microscopic, that causes disease in plants. Plant pathogens can be fungi, bacteria, nematodes, and other living things. They can infect and disrupt plant growth and survival, so a key concern is to prevent their introduction into California native habitats.

www.cc.cnps.org/phytophthora/
www.calphytos.org

PROTECT OUR NATURAL AREAS

Every Step Counts!



*Endangered manzanita
killed by root rot*



*Invasive broom
wipes-out natives*

Invasive weed seeds and plant pathogens infect native habitats via our boots and car tires.

DO THIS to help protect plants in our parks & habitat:

1. Keep a brush, a spray bottle of alcohol, and a closeable container in your vehicle.

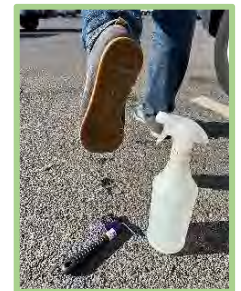
2. Before entering a natural area, brush the dirt and seeds from the top and bottom of your shoes into the container.



3. Remove additional dirt and plant material from your clothing and gear. Add to the container.



4. Spray the soles of your shoes with alcohol.



5. Don't take home spores or weed seeds! Repeat the process back at your car.